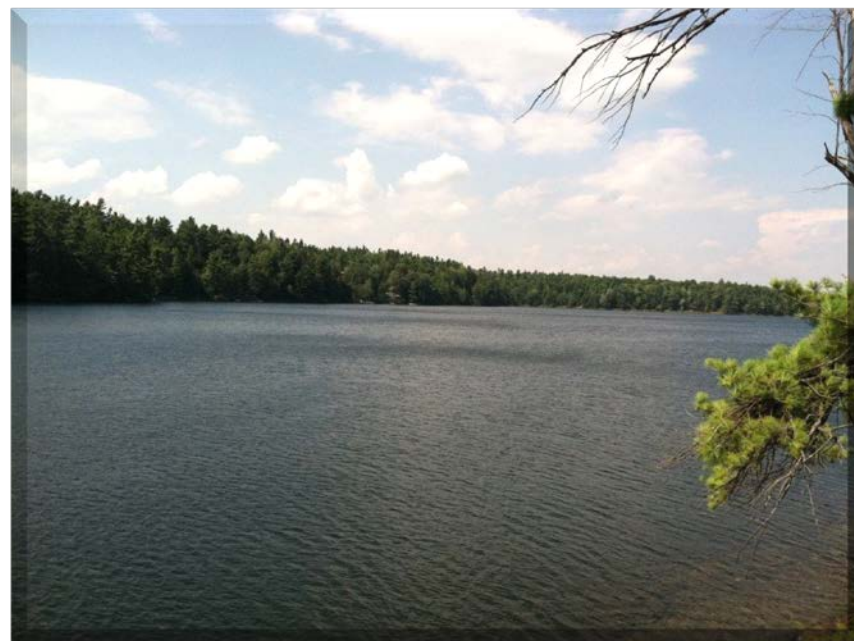


# Red Lake



## General Lake Information

**Lake Association:** no known association

**Location:** Town of Theresa

**County:** Jefferson

**Basin:** St. Lawrence River

**Size:** 366 acres

**Lake Origins:** Natural

**Watershed Area:** 1920 acres

**Mean Depth:** 27 feet

**Max Depth:** 47 feet

**Public Access:** DEC Beach Launch

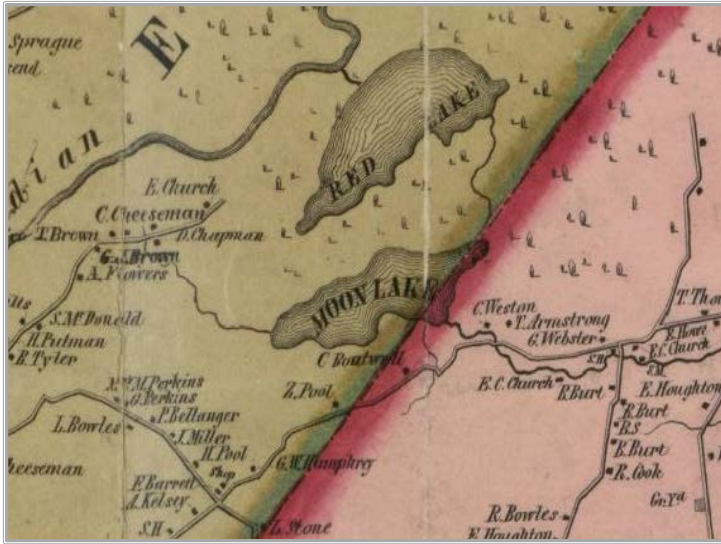
**Fish Species Present:** Northern Pike, Smallmouth Bass, Largemouth Bass, Walleye, Yellow Perch, Black Crappie, Bluegill, Brown Bullhead

**CSLAP Participant:** No

**Health Advisories:** NYSDOH Mercury Advisory for Walleye is "Up to 1 Meal/Month" and for All Other Fish, "Up to 4 Meal/Month" Pregnant women and children under 15 should not eat any fish

*Because Red Lake does not actively participate in the CSLAP program, no water quality data is publicly available.*

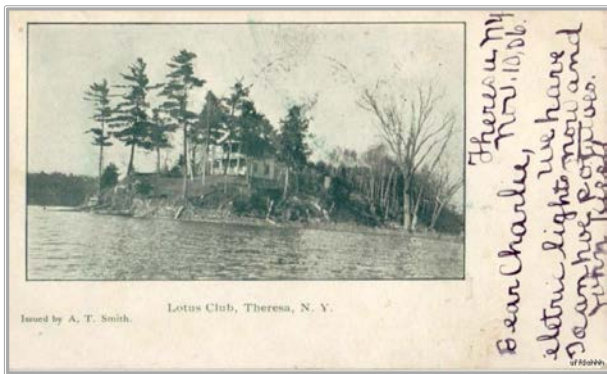




Map circa 1855

## Brief History of Red Lake

Some have said that the name Red Lake was shortened from Red Man's Lake, so called for the "Red Men" who liked to fish and hunt there. Others assert the lake is simply named for the reddish cast of the water. Which ever of these tales is true, one thing is certain; Red Lake was one of the first of the Indian River Lakes to reach popularity. The lake is easily reached by water route of the Indian River. This made it a popular spot, more than 200 years ago when roads were few in the northern part of Theresa, for picnics and fishing.



Its steep bluffs and forested shorelines make Red Lake one of the most beautiful of the Indian River Lakes. Although it has not been overcome by numerous cottages, the lake is not without its challenges. The mercury content, believed to come from atmospheric contamination, has resulted in a fish consumption advisory. The NYSDEC maintains a monitoring program on the lake due to the mercury content.



Though only about four miles north of Theresa by land, the winds and curves of the Indian River make for a six mile journey. The mystery of the river's sinuous curves and high bluffs make the trip, in former years as well as now, a delightful experience.

Red lake is about 2 miles long and a half mile wide at its widest. Near the lake's outlet to Indian River is a sandy point where many Native American relics have been discovered and where members of the early Simonds family settled.