

General Lake Information

Location: Town of Theresa

County: Jefferson

Basin: St. Lawrence River

Size: 275 acres

Watershed Area: 2,560 acres

Lake Origins: Natural

Average Depth: 15 feet

Maximum Depth: 25 feet

Public Access: None

Fish Species Present: bass, bluegill, catfish, crappie, perch, pike, sunfish, walleye

CSLAP Participant: No

Because Muskellunge Lake does not have a public boat launch or actively participate in the CSLAP program, no water quality data is publicly available.

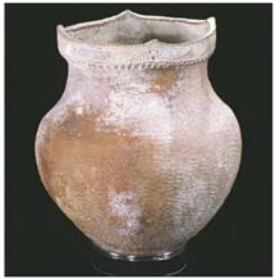
Muskellunge Lake Association

Muskellunge Lake

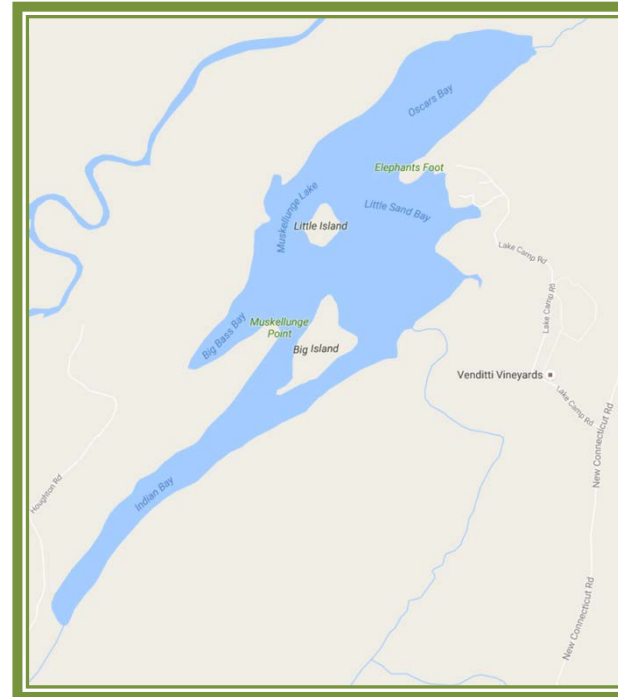


A Brief History of Muskellunge Lake

Muskellunge Lake is named for the large game fish that were at one time plentiful in its cool waters. The name fit well, but it could have been called Indian Lake for it was on Muskellunge Lake's sandy shore that George Sheley discovered an Indian tomb enclosed by flat stones. From that tomb he took some 1,600 arrowheads, as well as other articles, belonging probably to the Indian chief who was buried there. Just off the banks of the Indian River, and just below this lake, are the Indian gardens and one of the finest Indian potholes to be found in the east is cut into granite rocks there. The Pothole is located on the lake and the two examples of Native American artifacts were found in this region by George Sheley, who spent a great deal of time exploring and excavating Muskellunge and Red Lake.



Muskellunge Lake is a private lake located near Oxbow, NY. Approximately 75% of the lake's watershed is forested. Muskellunge Lake is well known for its fishing including crappie, perch, bluegill, sunfish, catfish, bass, pike, and even the occasional walleye. Like its nearest neighbor, Red Lake, Muskellunge Lake has a strong background of Native American history.



Muskellunge Lake has not participated in the Citizens Statewide Lake Assessment Program (CSLAP) so there is no water quality data available to the public. CSLAP volunteers are lake residents who collect samples and gather data in order to gain a better understanding of the ecology of their lake.



Gene's Camp is located on Muskellunge Lake. They provide accommodations and boat launch.

